



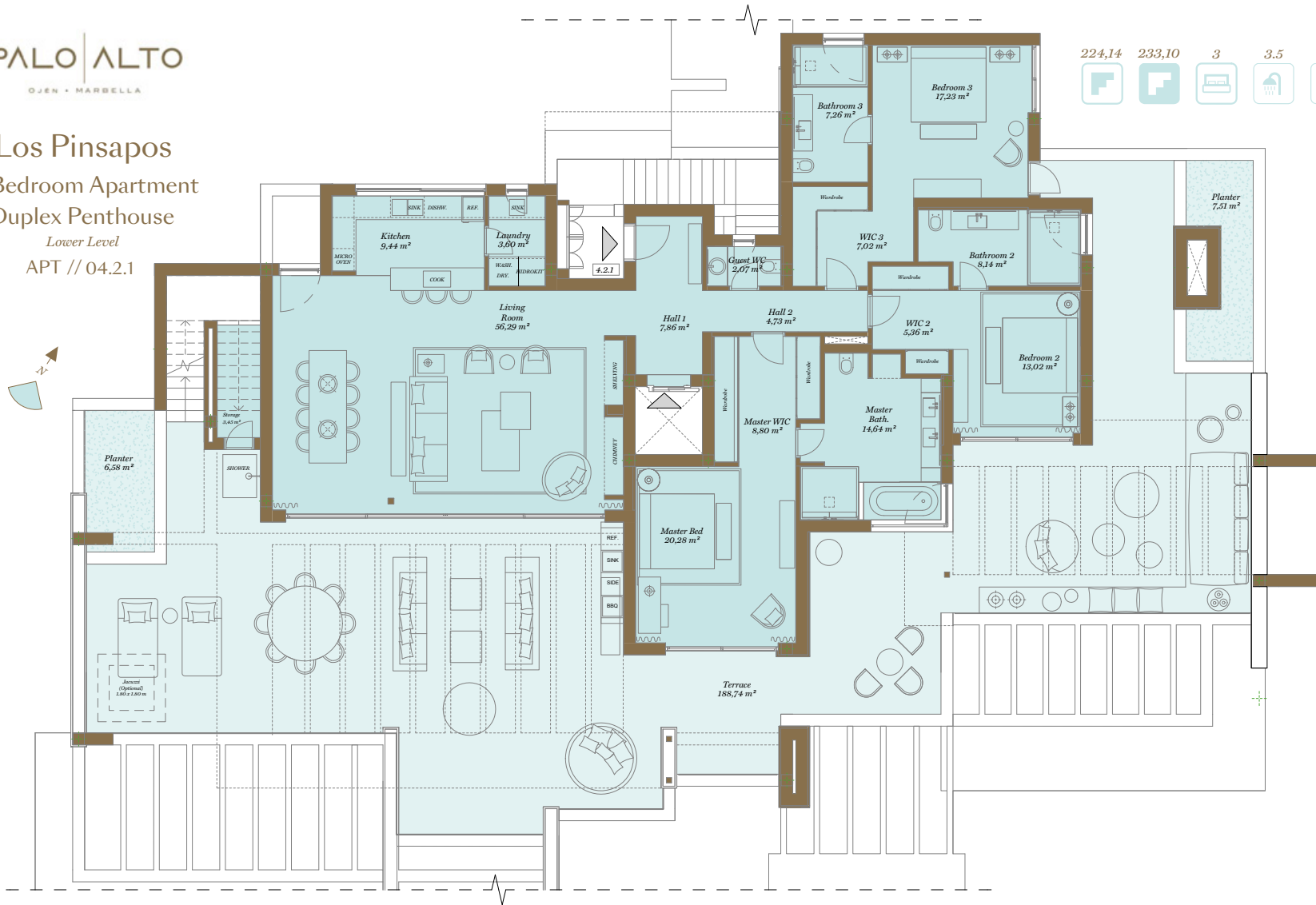
*A beautifully appointed apartment set on an elevated plateau with the most magnificent panoramic views of the Mediterranean Sea.*

*Finished by renowned interior designer Pedro Peña and featuring spacious open-plan interiors that are customisable, expansive terraces, solariums, and lush private gardens. Residents will have full access to all of Palo Alto's amenities, in addition to a private outdoor cascading infinity pool, gym, spa, hammam and sauna.*

*Un apartamento exquisitamente presentado, situado en el área más noble de Palo Alto con las vistas panorámicas más magníficas del Mar Mediterráneo.*

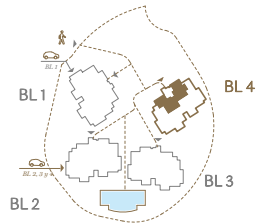
*Decorados por el renombrado interiorista Pedro Peña, ofrecen interiores diáfanos y espaciosos que son personalizables, grandes terrazas, solarios y frondosos jardines privados. Los residentes tendrán acceso total a todas las instalaciones de Palo Alto, además de su propia piscina infinita con cascadas, gimnasio, spa, sauna y baño turco.*

Los Pinsapos  
3 Bedroom Apartment  
Duplex Penthouse  
Lower Level  
APT // 04.2.1

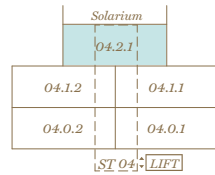


This document is for information only. The areas and measurements shown are approximate and may be modified for technical reasons and/or administrative issues. All furniture shown is for illustrative purposes.  
\*APT: Apartment // SOL: Solarium // BAS: Basement // Floor: Apartment // C.A.W.E.U.: Common Area With Exclusive Use

Site Plan



Block 04



Apartment | 04.2.1

Indoor Usable Area	185,71 m <sup>2</sup>
Terrace Usable Area	188,74 m <sup>2</sup>
Total Usable Area	391,99 m <sup>2</sup>
Garden (C.A.w.E.U.)	

Indoor Constructed Area	224,14 m <sup>2</sup>
Terrace Constructed Area	233,10 m <sup>2</sup>
Total Constructed Area	457,24 m <sup>2</sup>

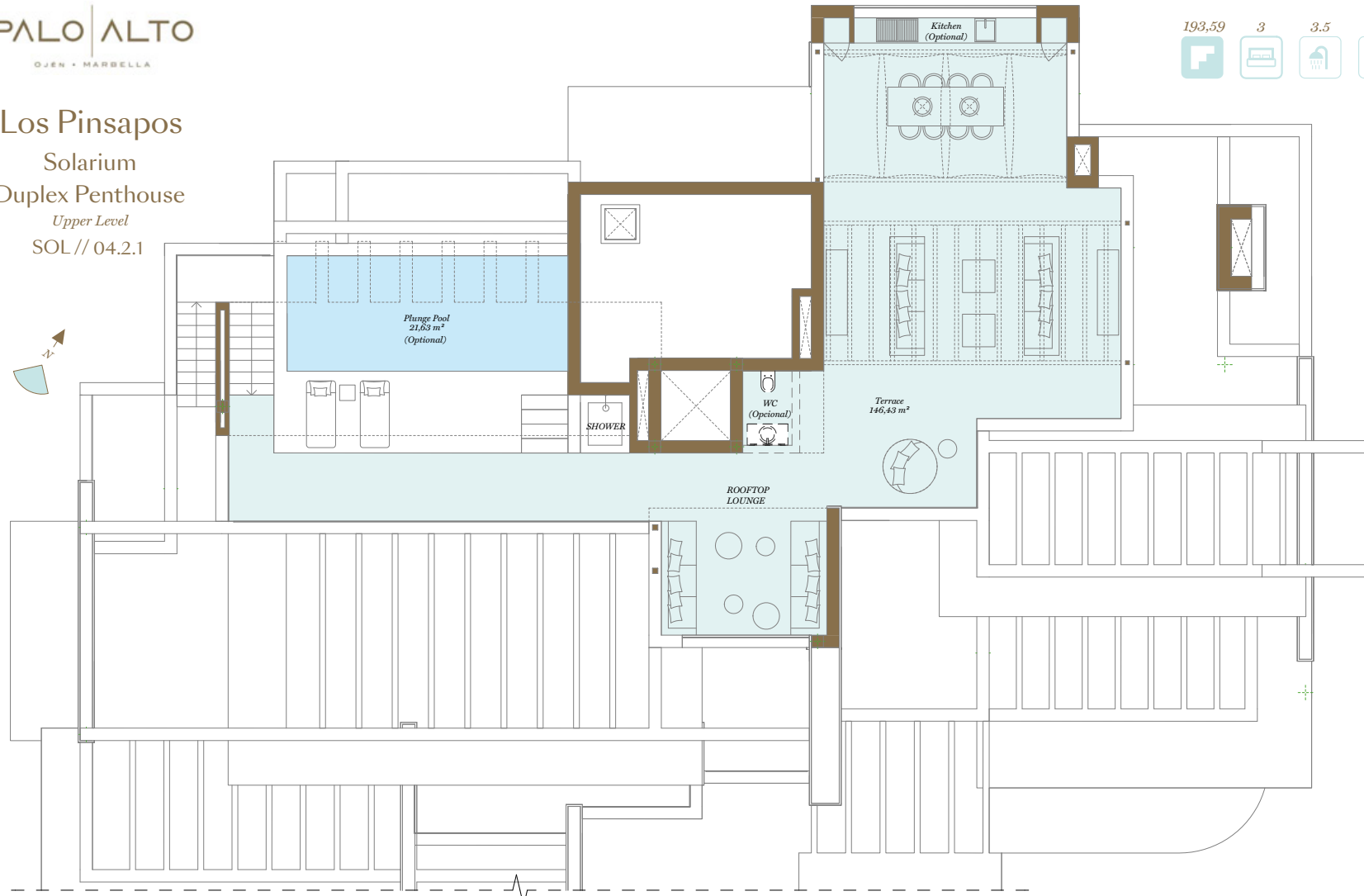


This document is for information only. The areas and measurements are approximate and may be modified for technical reasons and/or administrative issues. All furniture shown is for illustrative purposes. Images are computer generated and are indicative only. Prices shown without IVA (VAT) at 10%. The developer reserves the right to change the prices at any time.

Este documento es sólo informativo. Las áreas y medidas son aproximadas y podrían sufrir modificaciones por razones técnicas y/o administrativas. Todos los muebles e imágenes mostradas han sido elaboradas por ordenador para fines orientativos. Precios sin IVA al 10%. El promotor se reserva el derecho de cambiar los precios en cualquier momento.

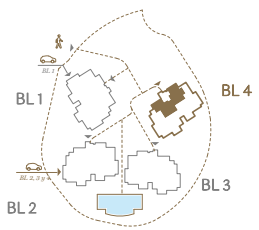
Los Pinsapos  
Solarium  
Duplex Penthouse  
Upper Level  
SOL//04.2.1

193,59 3 3.5 2 1

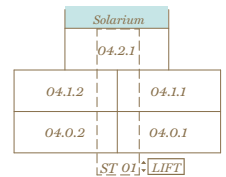


This document is for information only. The areas and measurements shown are approximate and may be modified for technical reasons and/or administrative issues. All furniture shown is for illustrative purposes. \*API: Apartment // SOL: Solarium // BAS: Basement // Apartment Code: Stairway - Floor - Apartment // C.A.W.E.U.: Common Area With Exclusive Use

Site Plan



Block 04



Solarium | 04.2.1

Indoor Usable Area	
Terrace Usable Area	168,07 m <sup>2</sup>
Total Usable Area	
Garden (C.A.w.e.U.)	

Indoor Constructed Area	
Terrace Constructed Area	193,59 m <sup>2</sup>
Total Constructed Area	



This document is for information only. The areas and measurements are approximate and may be modified for technical reasons and/or administrative issues. All furniture shown is for illustrative purposes. Images are computer generated and are indicative only. Prices without IVA (VAT) at 10%. The developer reserves the right to change the prices at any time.

Este documento es sólo informativo. Las áreas y medidas son aproximadas y podrían sufrir modificaciones por razones técnicas y/o administrativas. Todos los muebles e imágenes mostradas han sido elaboradas por ordenador para fines orientativos. Precios sin IVA al 10%. El promotor se reserva el derecho de cambiar los precios en cualquier momento.