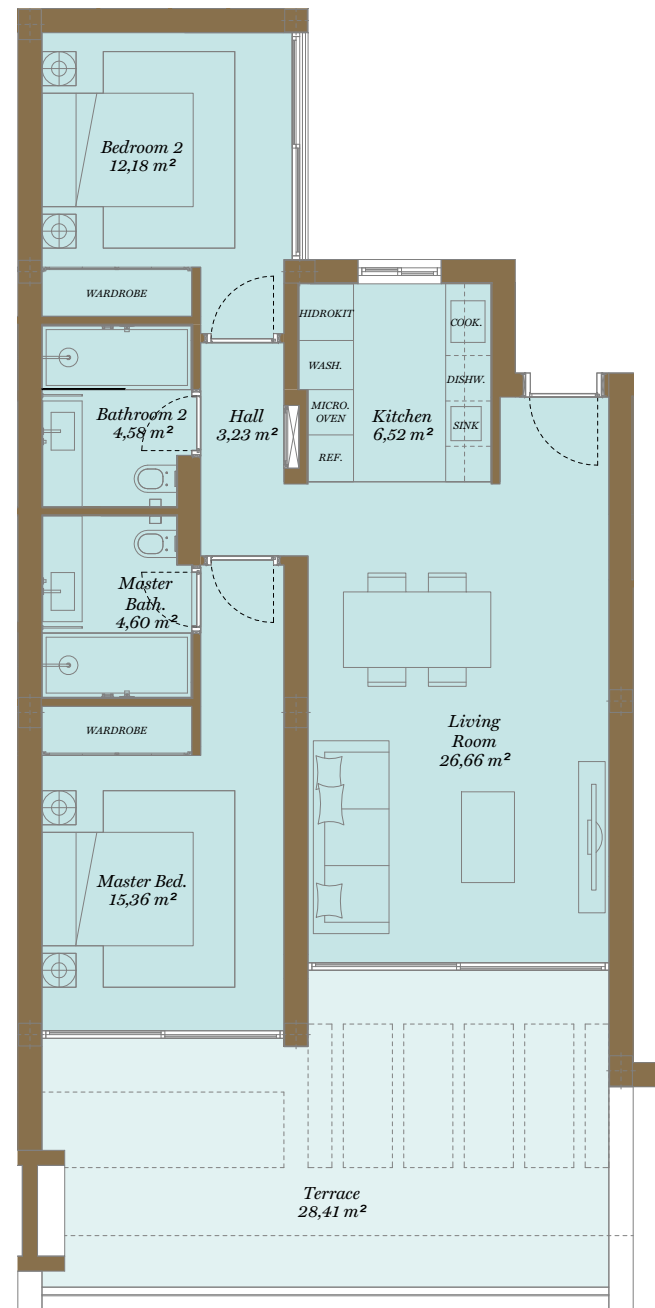


Los Eucaliptos

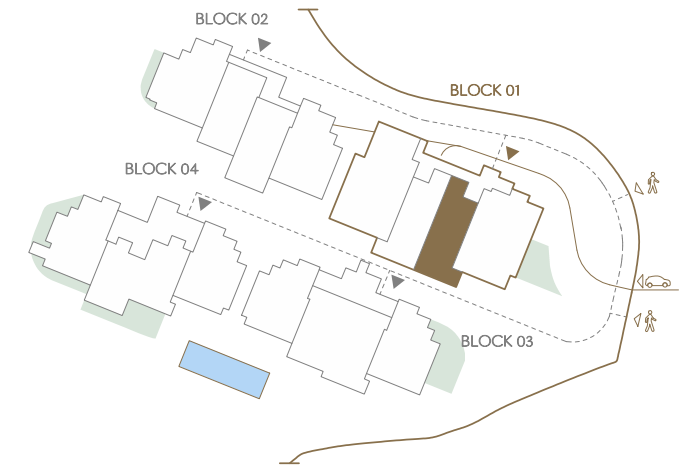
2 Bedroom Apartment

APT // 01.1.2



86,94 31,80 2 2 1 1

Site Plan



Apartment | 01.1.2

	01.2.2	01.2.1	
01.1.4	01.1.3	01.1.2	01.1.1
01.0.4	01.0.3	01.0.2	01.0.1
	ST 01	LIFT	

Apartment | 01.1.2

Indoor Usable Area	73,14 m ²
Terrace Usable Area	28,41 m ²
Total Usable Area	101,54 m²
Indoor Constructed Area	86,94 m ²
Terrace Constructed Area	31,80 m ²
Total Constructed Area	118,74 m²
Garden (C.A.w.E.U.)	—



This document is for information only. The areas and measurements are approximate and may be modified for technical reasons and/or administrative issues. All furniture shown is for illustrative purposes. Images are computer generated and are indicative only. Prices shown without IVA (VAT) at 10%. The developer reserves the right to change the prices at any time.

Este documento es sólo informativo. Las áreas y medidas son aproximadas y podrían sufrir modificaciones por razones técnicas y/o administrativas. Todos los muebles e imágenes mostradas han sido elaboradas por ordenador para fines orientativos. Precios sin IVA al 10%. El promotor se reserva el derecho de cambiar los precios en cualquier momento.