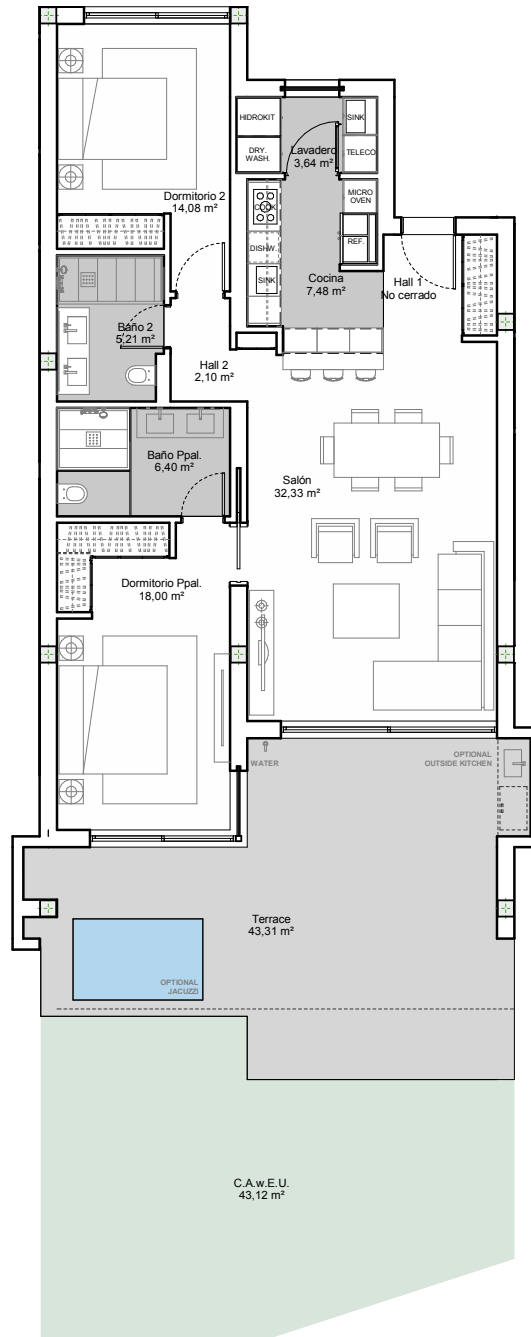


APARTMENT 17.0.2

2 BEDROOMS

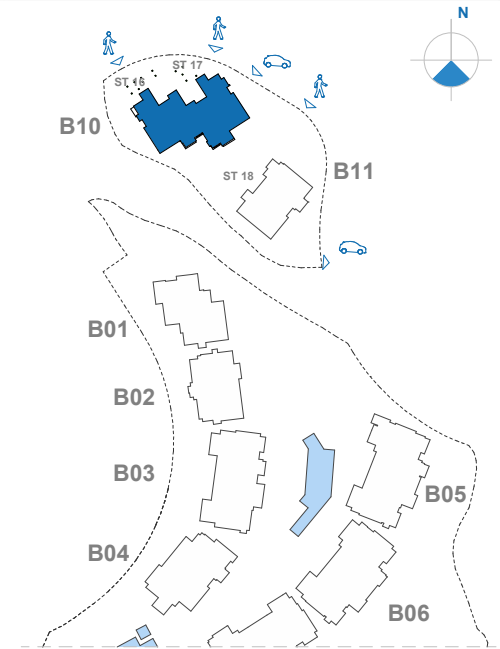
This document is for information only. The areas and measurements are approximate and may be modified for technical reasons and/or administrative issues. All furniture shown is for illustrative purposes. Images are computer generated and are indicative only. Prices shown without IVA (VAT) at 10%. The developer reserves the right to change the prices at any time.

Este documento es sólo informativo. Las áreas y medidas son aproximadas y podrían sufrir modificaciones por razones técnicas y/o administrativas. Todos los muebles e imágenes mostradas han sido elaboradas por ordenador para fines orientativos. Precios sin IVA al 10%. El promotor se reserva el derecho de cambiar los precios en cualquier momento.

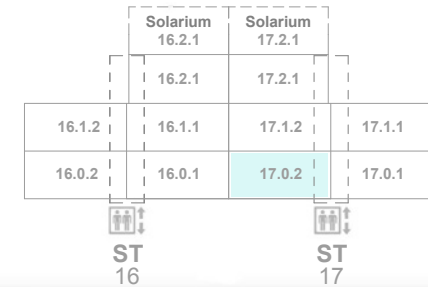


E: 1/100

Site Plan



Block 10 Stairway 17



Apartment 17.0.2 2 BEDROOMS

Indoor Usable Area	89,24 m ²
Terrace Usable Area	43,31 m ²
Total Usable Area	194,67 m²
Indoor Constructed Area	111,32 m ²
Terrace Constructed Area	45,25 m ²
Total Constructed Area	156,56 m²
C.A.W.E.U.	43,12 m²

PALO ALTO OJÉN - MARBELLA



111,32 m²



45,25 m²

