

*A stunning apartment with generous outdoor and indoor living spaces. Customisable finishes from a hand-picked range by Gunni & Trentino including a wide selection of tiles and flooring.*

*Featuring panoramic views of the Andalusian hills and Mediterranean Sea, two private outdoor swimming pools and a heated lap pool and play areas. Residents will have full access to all of Palo Alto's amenities.*

*Un fantástico apartamento con espacios generosos y áticos con solarium. Acabados personalizables seleccionados cuidadosamente por Gunni & Trentino, con una amplia gama de azulejos y suelos.*

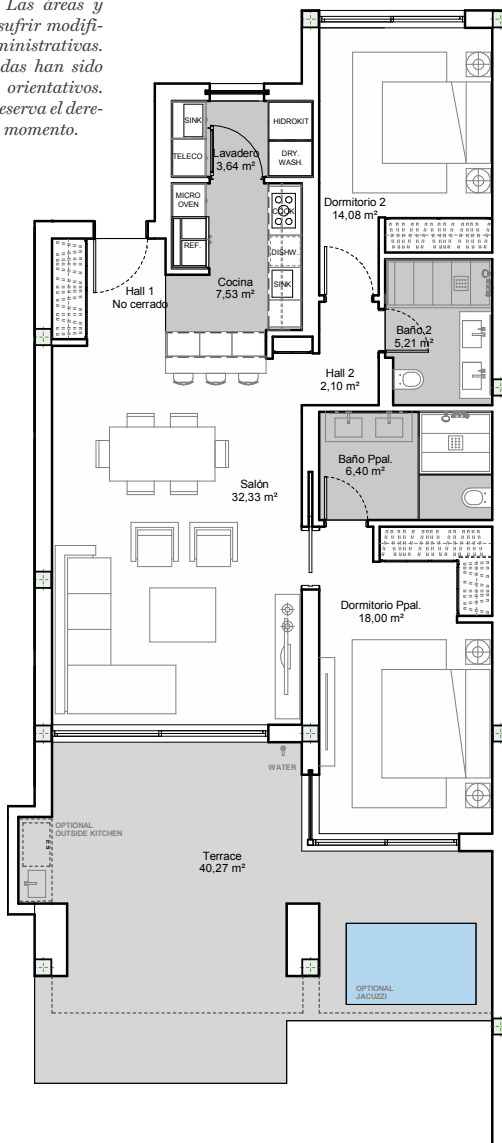
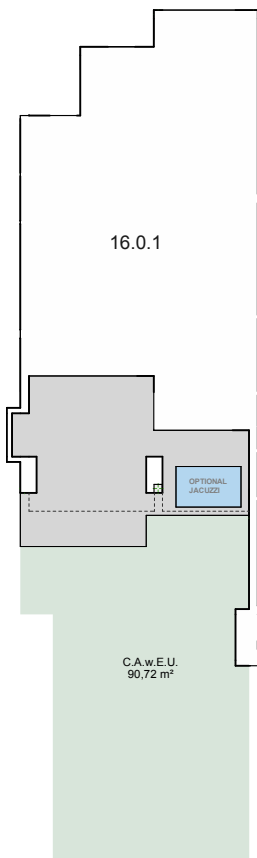
*Ofrecen vistas panorámicas del monte y del Mediterráneo, dos piscinas privadas exteriores con una piscina climatizada, áreas recreativas y acceso total a todas las instalaciones de Palo Alto.*

# APARTMENT 16.0.1

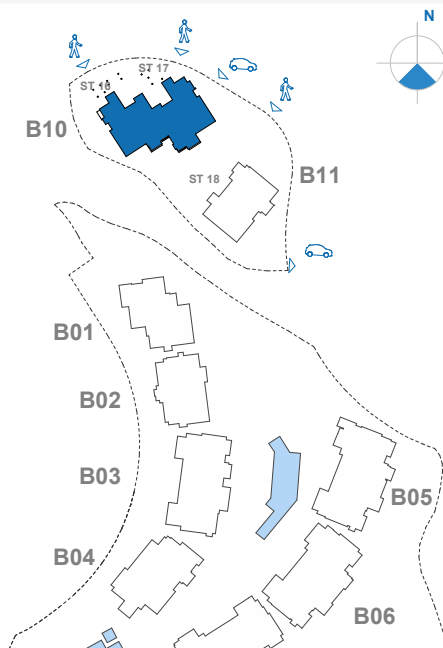
## 2 BEDROOMS

This document is for information only. The areas and measurements are approximate and may be modified for technical reasons and/or administrative issues. All furniture shown is for illustrative purposes. Images are computer generated and are indicative only. Prices shown without IVA (VAT) at 10%. The developer reserves the right to change the prices at any time.

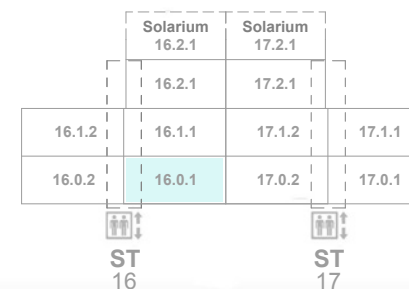
Este documento es sólo informativo. Las áreas y medidas son aproximadas y podrían sufrir modificaciones por razones técnicas y/o administrativas. Todos los muebles e imágenes mostradas han sido elaboradas por ordenador para fines orientativos. Precios sin IVA al 10%. El promotor se reserva el derecho de cambiar los precios en cualquier momento.



### Site Plan

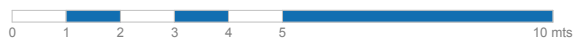


### Block 10 Stairway 16



### Apartment 16.0.1 2 BEDROOMS

Indoor Usable Area	89,29 m <sup>2</sup>
Terrace Usable Area	40,27 m <sup>2</sup>
<b>Total Usable Area</b>	<b>152,91 m<sup>2</sup></b>
Indoor Constructed Area	111,32 m <sup>2</sup>
Terrace Constructed Area	42,83 m <sup>2</sup>
<b>Total Constructed Area</b>	<b>154,15 m<sup>2</sup></b>
<b>C.A.W.E.U.</b>	<b>90,72 m<sup>2</sup></b>



E: 1/100



111,32 m<sup>2</sup>



42,83 m<sup>2</sup>

